

ニコラス会長年度 2020 年 5 月 28 日 第 721 号

## 第 837 回例会(第一回オンライン例会)5 月 21 日

■ニコラス会長 President Nikolaus

### The Corona Situation in Germany

The Corona-Situation in Germany could have been much worse. The Covid-19 death toll has stayed relatively low compared to other neighboring countries. Anyhow the number of infections and related deaths is approx. 10 times higher than the reported figures in Japan.

The Government ordered a compulsory lock-down end of March. Borders to neighboring countries were closed which is unusual in Europe.

Now for little more than one week the restrictions were lifted by observing local flexibility to decide exactly how and when to ease social distancing recommendations.

Big cities may need to move more slowly than rural areas, for example. But importantly, Germany has instituted a nationwide trigger — if new cases rise above 50 per 100,000, it automatically halts the easing of social distancing.

#### 1) Health System

is in a good shape and could easily cope with the demand of patients.

Hospitals accepted intensive care patients from other European countries like Italy, Spain and France. The diagnostics industry was able to conduct mass testing from early on to get reliable figures. Various German medical companies are working hard to find a vaccine and other medications.

#### 2) Tracing App

Since yesterday Apple iOS 13.5 is available offering for the first time together with Google an interface for a tracing app. With great respect for data privacy Germany will offer a voluntary app to ensure quick information to people who might have met an infected person. Let's see if enough smart phone owners are using such an app to ensure proper operation.

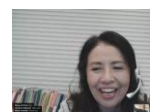
#### 3) Upcoming summer holiday season

People are very much concerned on how to enjoy vacation days. Will it be allowed to visit popular holiday spots?

Is there enough Hotel capacity available? Can you meet with other people?

How safe is it to use a flight? Which countries are considered safe?

I am personally a little bit stuck in Tokyo — my wife is since March in Germany with our children, but she is not allowed back into Japan even if she is a resident for many years here. I could go back home — but this would one-way only and I am not sure by when I could come back and go to office again.



■有本次年度奉仕プロジェクト委員長 Service Project Chair.(for 2020-21) Arimoto

シカゴ地域 病院や老人ホームへ iPad を送る GG プロジェクト

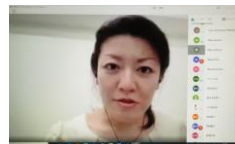
**IPads for Chicago & Chicago Area Safety Net Hospitals and Nursing Homes in Need**

6450 地区(米国シカゴ地区)は、地区のセーフティネット病院と最も困窮している老人ホームに iPad を提供するため 100 台の iPad を 50 の老人ホームやセーフティネット病院に届けることを目的とする。そのための資金として、ロータリー財団のグローバル補助金を使用する。

提唱者: Rotary District 6450 (Chicago area) RC Aurora

予算: \$45,000

(内、広尾 RC 支援金 \$1,300、2750 地区の DDF \$13,000 の予定)



Patients, residents and care takers are having a very difficult time in nursing homes and safety-net hospitals without being able to host visitors. All hospitals and nursing homes are on emergency "lockdown" due to COVID-19. No friends or family can visit! Patients are isolated and dying without the opportunity to see or say goodbye to their loved ones, and family members are desperate to see their parents and grandparents.

District 6450 is planning to improve this situation by implementing a Global Grant to provide iPads to our District safety-net hospitals and the neediest nursing homes.

The purpose of this project is to raise the funds necessary to acquire and safely deliver 100 iPads to 50 nursing homes and safety net hospitals.

ROTARY CLUB (Names): Rotary District 6450 (Chicago area) RC Aurora

Budget: \$45,000 (USA)

(Hiroo RC \$1,300, District 2750 DDF \$13,000 estimate)

■米山記念奨学生 (2020/4/1~2021/3/31)王 詰君(オウ テックン)さん御紹介

Profile of Yoneyama Scholarship Student (2020/4/1~2021/3/31) Ms. Zhejun Wang

氏名 Name(英文): Wang, Zhejun 国籍 Nationality: 中国 China 生年月日 Birthday: 1992/3/9

所属先 Academic course/major: 東京海洋大学 学部課程 食品生産科専攻

Tokyo Univ. of Marine Science and Technology, Dept. of Food Science and Technology

研究テーマ Research Theme: 食品冷凍学 Food Refrigeration Science Laboratory

■例会記録(5/21) 出席 28 名中 16 名 (57.14%)

RI 第 2750 地区 山の手東グループ

東京広尾ロータリークラブ 2019-20 年度 会長:ニコラス・ボルツェ 幹事:上田 英男

例会日: 毎週木曜日 12:30~13:30

例会場: 六本木ヒルズクラブ 東京都港区六本木 6-10-1 六本木ヒルズ森タワー51 階

事務局: 東京都港区六本木 6-10-1 六本木ヒルズ森タワー51 階  
六本木ヒルズクラブ TEL/FAX: 03-6809-4240

Rotary International District 2750

**ROTARY CLUB OF TOKYO HIROO**

2019-20 President: Nikolaus Boltze Secretary: Hideo Ueda

Regular Meetings: Thursday 12:30-1:30pm at Roppongi Hills Club 51<sup>st</sup> floor, Mori Tower  
6-10-1, Roppongi Minato-ku, Tokyo 106-6151

Club Office: Roppongi Hills Club 51<sup>st</sup> floor, Mori Tower

6-10-1, Roppongi Minato-ku, Tokyo 106-6151 TEL/FAX: 03-6809-4240

E-mail: hiroo@hiroorc.org URL: <http://www.hiroorc.org>

